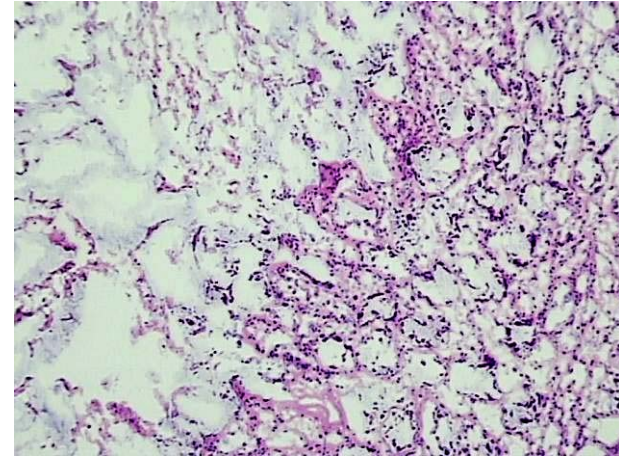
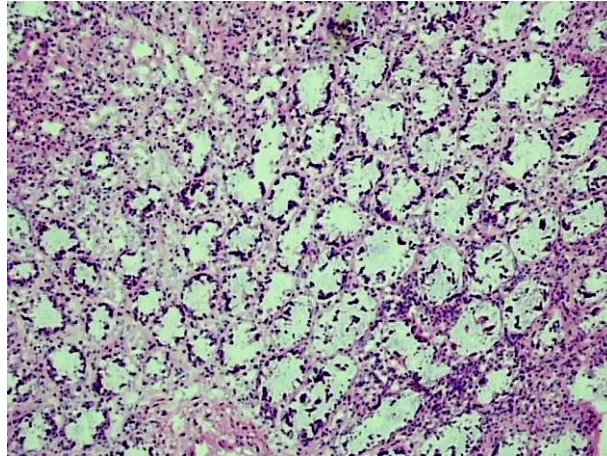
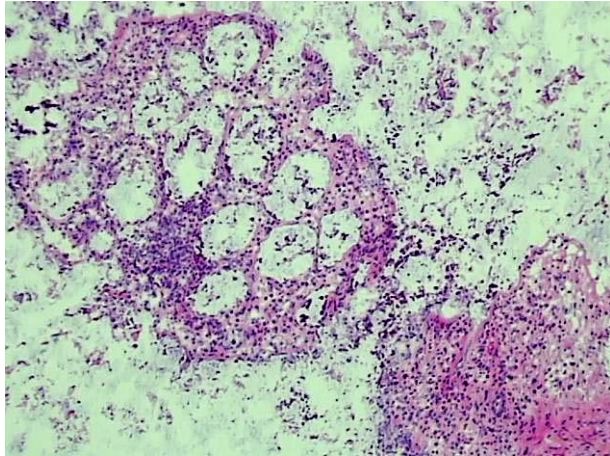
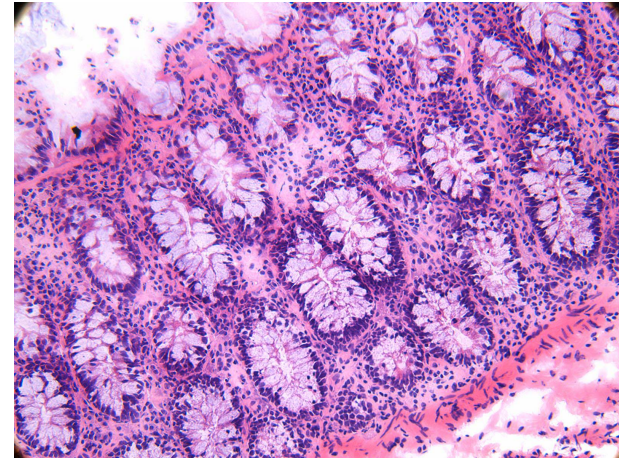
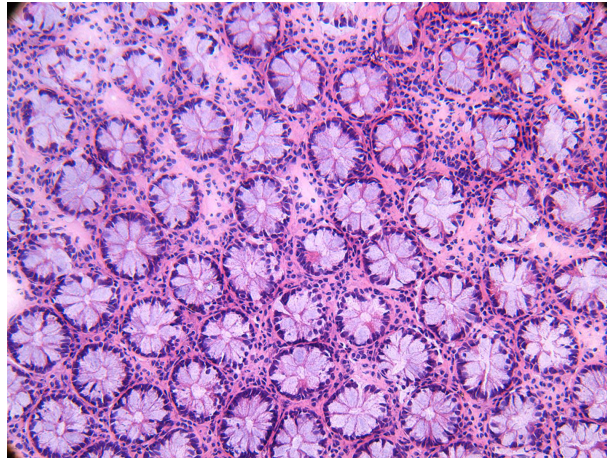
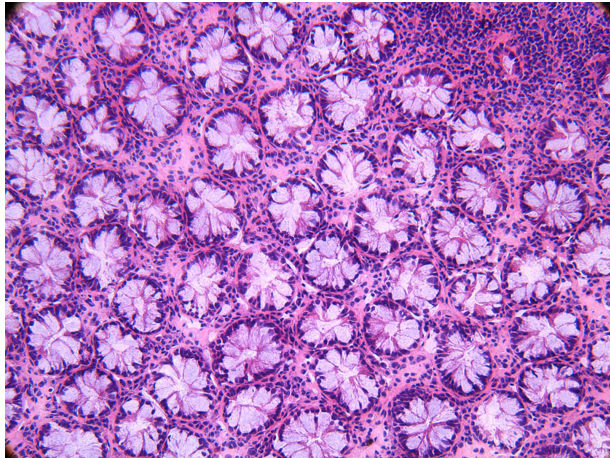


H & E of Normal Human Colon Biopsies Transported and Stored in RPMI and AQIX® RS-I media

RPMI



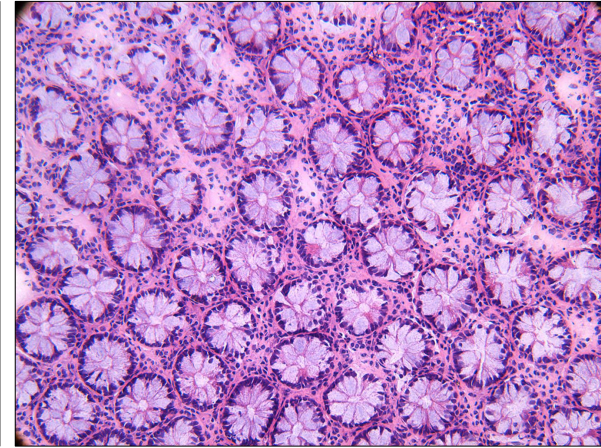
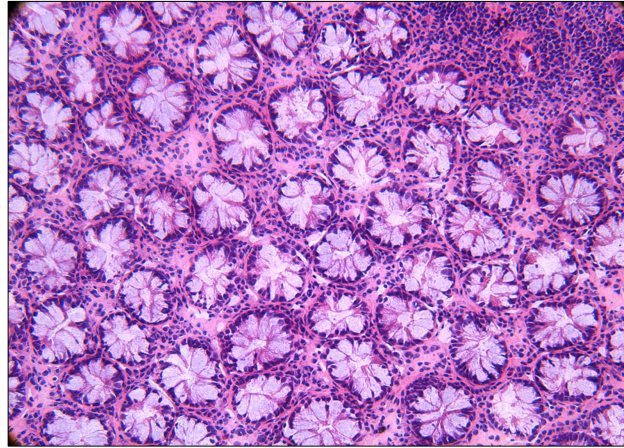
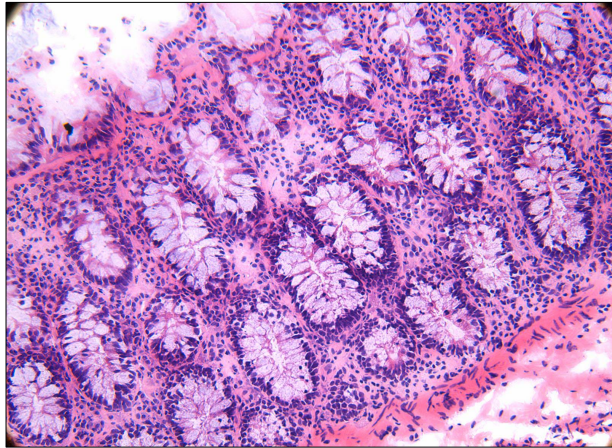
AQIX® RS-I



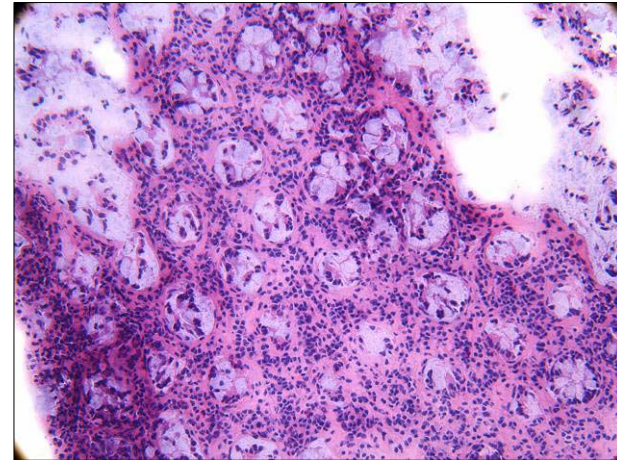
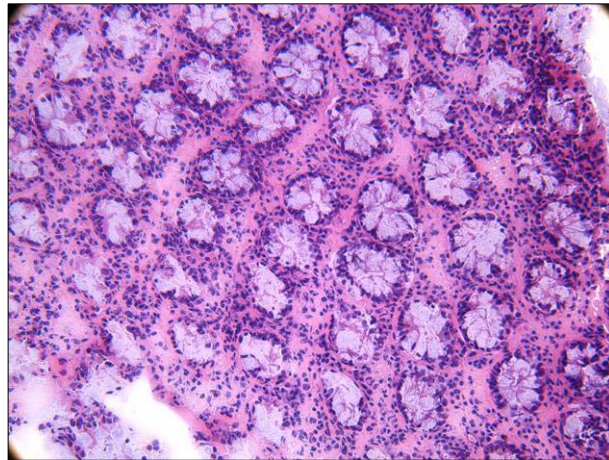
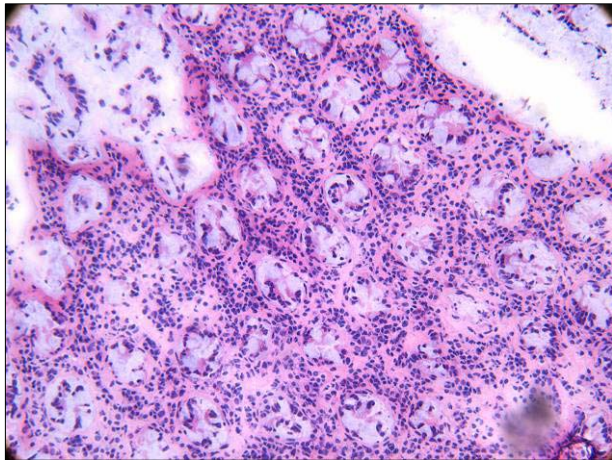
- 30h post operation
- Transportation on ice

Comparison of Human Colon preservation Viability Using the 2 types of AQIX® media

AQIX® RS-I



AQIX® RS-S

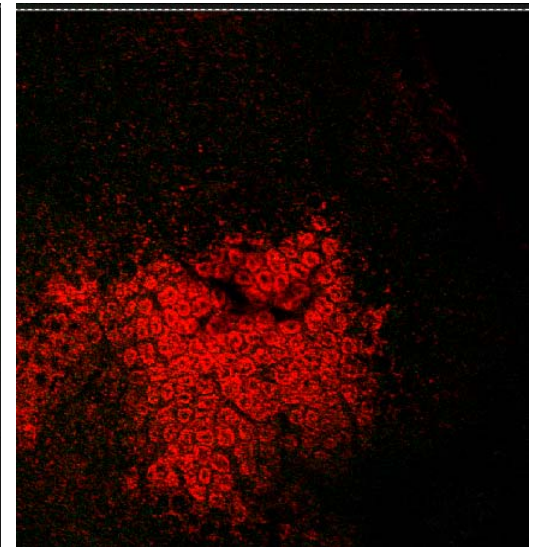
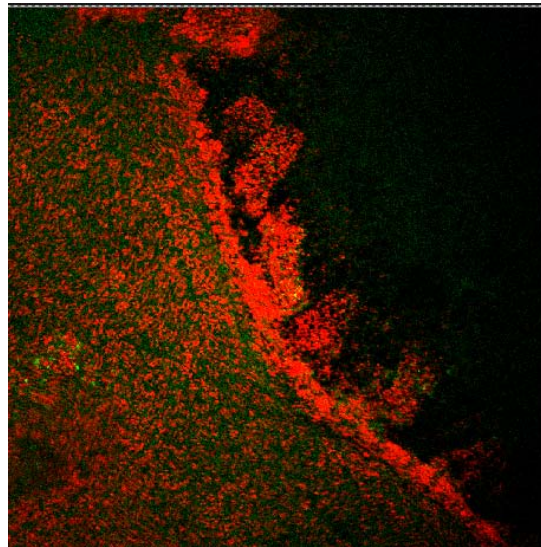
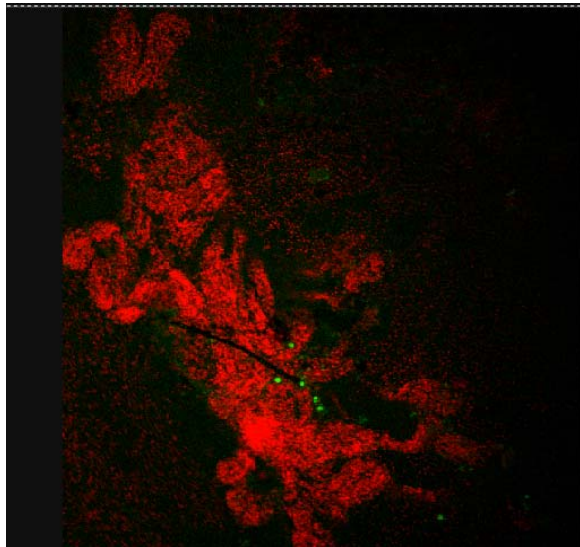


- 30h post operation
- Transportation on ice

Viability of Mouse Intestinal Biopsies After 24 Hour Storage on Ice

Staining: green=live; red=dead

RPMI



AQIX®

